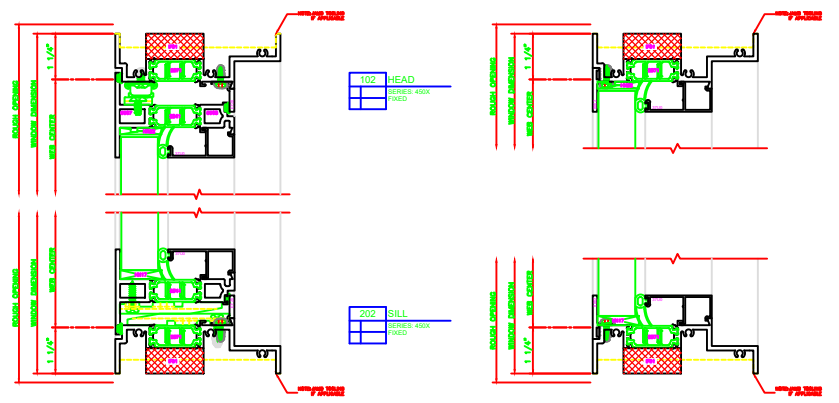
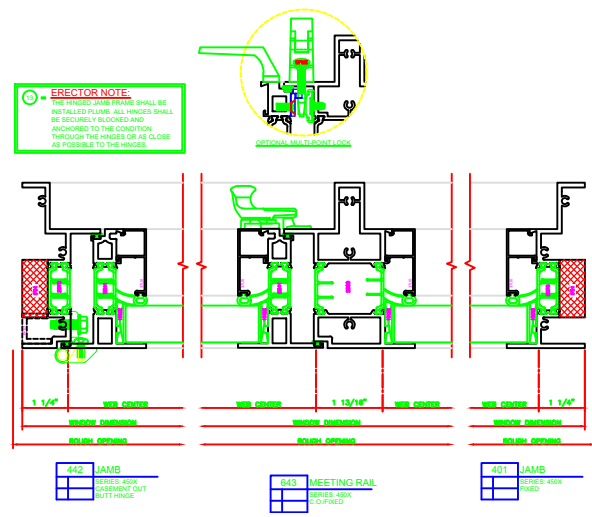


4-BAR ARMS
BUTT HINGE



ERECTOR NOTE:
THE MEETING RAIL SHALL BE INSTALLED FIRST. ALL HINGES SHALL BE SECURELY BLOCKED AND ANCHORED TO THE CONDITION THROUGH THE HINGES OR AS CLOSE AS POSSIBLE TO THE HINGES.